



Christian Family Program

Resident Handbook

Our mission is to nurture deeply hurting girls to restored relationship with God, family and community.

(revised 2019)

Commitment

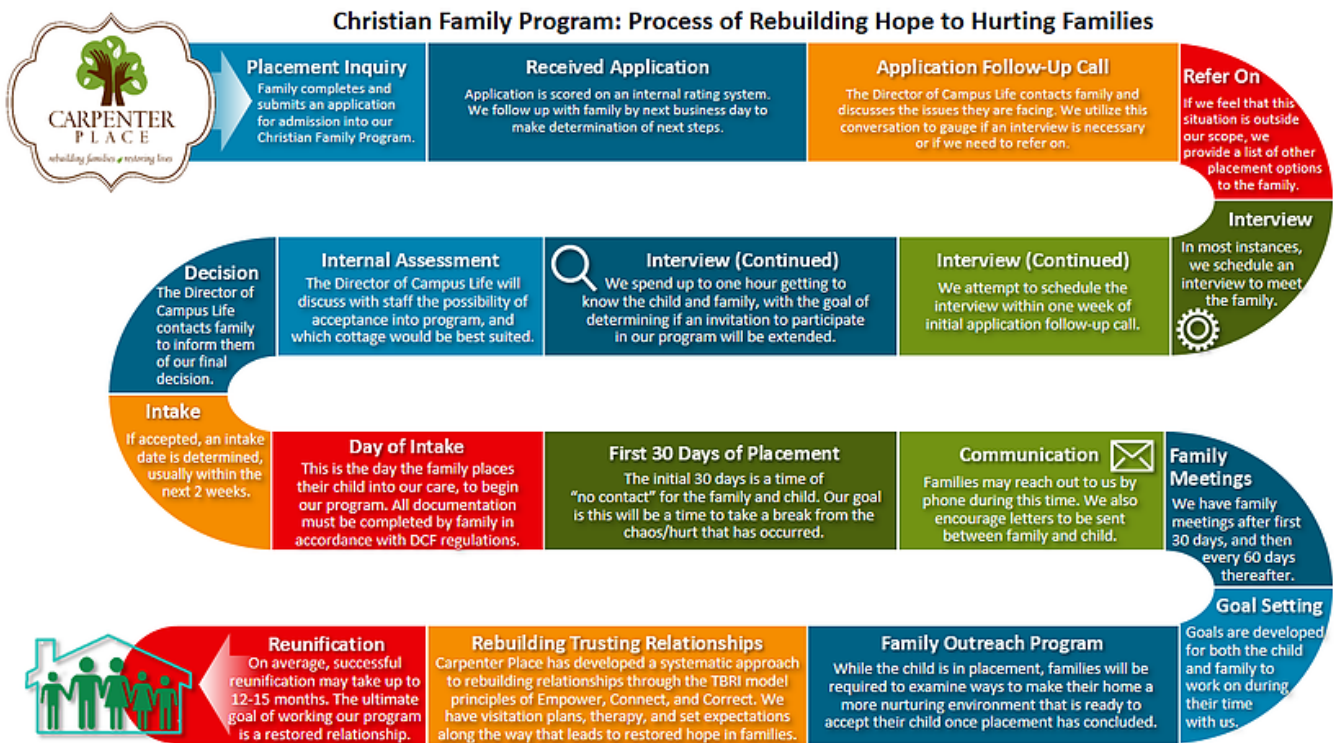
We are committed to helping girls reach a place of spiritual, physical, and mental health through the use of connecting, correcting and empowering principals that will lead to restored relationship with God, family, and community. We do this by providing a therapeutic environment in which house parents and staff model appropriate and regulated behaviors and create moments of teaching that can be applied directly to the child and their personal goals. These life lessons can then be carried with the child to their home environment where change and healing can be seen by the family.

Parents must be committed to working with their child as well. This includes attendance at family meetings, scheduled visits, and family therapy when appropriate. Additionally, a willingness to make changes to the home environment will facilitate a more positive reintegration.

Faith

Carpenter Place was established through the Christian faith of one woman who had a huge heart for children and families in crisis. Today we honor her vision of Christian service through the faith of our house parents, staff and administrators in addition to our commitment to local Churches of Christ. All residents will attend an area congregation with her house parent. Residents will also be led in individual and/or group Bible studies with staff, volunteers and house parents. These practices are designed to help you explore, develop and grow in deeper faith and relationship with God. We work with residents where they are and do not expect girls to be further along than they actually are.

Program/Goals



Communication

Everyone needs some time to adjust. Our program utilizes a **30-day break** to allow families and residents the opportunity to take a much needed time out. This allows family members to take a step back and gain a fresh perspective and to approach relationship building with renewed vigor.

Within that 30-day break and beyond, families are encouraged to connect with their daughter by **mail**. Letters and cards are a good way to communicate thoughtfully and intentionally. All mail is monitored coming and going in an effort to manage appropriate language, emotions and behaviors.

Phone calls will begin at the end of a resident's 30-day break. Calls are usually made once per week on a day agreed upon by staff and families. The house parents will determine if a child is in a place to have a positive phone call and may make arrangements to alter the day and time in order to best manage the girl's unique situation. However, parents are encouraged to communicate with staff at any time to remain connected to their child and their progress.

As residents progress through their programs we encourage taking steps toward reintegration. This primarily includes **visits** by family here on campus, around town and at home. Visits are determined by the family's ability to manage and maintain a positive working relationship with the resident at whatever stage of growth they are in. Staff will make recommendations based on behaviors and stresses that may be related to this type of interaction with family.

Parents always retain the right to visit, call or take their child on pass without our approval, however, doing so may put undue pressures on the child and relationship with the family members.

House Parents

Carpenter Place employs a Christian husband and wife team that live on site in homes here on our campus. House parents model appropriate attitudes, behaviors, discipline, and spiritual life while creating a nurturing environment for girls to practice family living. House parents are not a replacement for loved ones at home, but strive to support, encourage, and guide girls back to restored relationships with parents, siblings, and extended family.

Cottages

Our cottages are designed to house up to 7 girls plus the house family. The cottages were built with an abundance of livable space to create a welcoming and engaging environment. Girls have access to games, craft supplies, and controlled, monitored media. Everyone is expected to share in the responsibility of caring for their spaces and the home. This often comes in the form of household chores. Additionally, cottages operate loosely on a schedule similar to the one found on the next page.



Bolin Cottage



Barrett Cottage



Harrold Cottage

Daily Schedule (example)

7:00am	Wake up
7:30am	Breakfast
8:20am	School
10:00am	Break/Snack
11:30am	Lunch
3:30pm	School Out/House Activity/Chores
5:30pm	Dinner
6:00pm	Family Time/House Activity
9:00pm	Room Time/Get ready for bed
10:00pm	Lights Out



Staff

Carpenter Place staff is made up of house parents, office staff, professionals, volunteers, and passionate individuals who are willing to give of themselves to make an impact on our residents.

Our office staff consists of our CEO, VP/Director of Development, Director of Campus Life, and an Office Manager. For an introduction of each individual, please visit our website. www.carpenterplace.org

Our online, accredited school is facilitated by our licensed teacher and oversight is maintained through the Otis Bison school district staff. www.southwindsacademy.com

Therapy is conducted once a week by a Licensed Clinical Psychotherapist. www.newperspectivescounselingcenter.net

Medication management is handled by a board certified family nurse practitioner who also earned a post-master's certificate as a psychiatric mental health nurse practitioner. www.kcsl.org/CounselingStaff.aspx

Mentors, volunteers, and dedicated individuals who interact with our residents are subjected to a background check and interview process.

Education

Students are enrolled in our on campus school, the Shellee Morrison Christian Learning Center, which incorporates an online-based curriculum which embodies a self-directed, self-paced (with a minimum daily assignment standard) Christian learning environment. Students have the opportunity to partner with the counselor and teacher to receive one on one assistance. Students are provided a laptop for school use with highly restricted access for educational purposes only. Classes start promptly at 8:30am every Monday through Friday and end at 3:30pm between the months of August and May. We follow a typical academic calendar which allows for holiday breaks, while completing over 170 days of instruction according to the Kansas Department of Education requirements.

Church

Carpenter Place house families attend a local Church of Christ congregation. Residents have the opportunity to engage in study and discussion with other Christians while growing in their faith through scriptural preaching and teaching. Girls also have the opportunity to participate in youth activities and practice healthy relationship building in a welcoming and controlled environment.

Community

Residents will have the opportunity to participate in community service projects, life skills training, and physical activities. In addition to school and church related activities, other social events are scheduled regularly in each house. Outing are a part of our efforts to enhance physical as well as social development.

Personal Items/Dress Code

You are to be dressed appropriately at all times. Inappropriate clothing will be confiscated. Appropriateness of proper dress (outfits) will be determined by your house parents. If you have any questions concerning appropriateness, please ask your house parents. All staff, their family, and residents will be dressed appropriately for all Carpenter Place events, as we will be representing the agency to our families we serve, volunteers, stakeholders, and donors.

In order to assist you in understanding what is considered appropriate, the following guidelines have been adopted:

- No article of clothing may be worn if it shows or suggests smoking, alcohol, drugs, is sexually suggestive or has any negative message (i.e., any garment displaying words or images which are aggressive, vulgar, or distasteful.).

- You may wear factory-made sleeveless shirts or tank tops that are three-finger width wide, but not hand cut-offs. Bra cannot be shown when wearing a tank top or sleeveless shirt. Any item that help bra straps stay unnoticed are allowed to be worn.

- Shirts that expose the stomach or cleavage may not be worn at any time.

- Shorts can be no shorter than fingertips when arms are hanging at side. Athletic shorts with factory made slit on side of legs may be worn, as long as the shorts are to fingertips.

- Dresses and Skirts need to be no higher than one hand width above the knee cap. Adding leggings does not make it appropriate if the proper guideline is not met.

- Leggings and Yoga pants can be worn as long as the top comes longer than finger tips. The primary concern is that all private areas remain covered at all times.

- Clothing which has been sliced, ripped or marked on by residents may not be worn. Factory-designed holes, tears, or slices need to be below fingertips on pants, and in appropriate areas on tops.

- If you wear buttoned shirts, you may leave the collar and one more button undone. Zipped tops should not be unzipped any lower than the opening of a buttoned shirt.

- Girls must wear a bra under any dress or top.

- You may not go barefooted outside of your bedroom. In the rest of the house you must wear at least slippers or socks.

- Socks should be worn by residents with tennis shoes. Tennis shoes should be laced and the laces should not drag. All residents must wear shoes/sandals when outside.

- You are to wear pajamas and nightgowns to bed. If desired, a t-shirt and a pair of shorts that are finger-tip length can be worn.

- No borrowing, loaning, or trading (BLT) of any personal items is allowed between residents.

- Swimsuits must be a one piece with two straps or appropriate midriff covering tank-kini. Be advised that some one piece suits are still inappropriate if too much skin is revealed.

Personal Items/Dress Code (continued)

Tops- no halter tops, tube tops, or see-through shirts. Spaghetti straps shirts are allowed only as undershirts, and must be covered with appropriate top. Jackets may be worn as part of an outfit, but the top underneath it must still be appropriate on its own as well.

There is to be no cleavage showing, whether too low or too tight of a shirt.

Tops shouldn't expose your midriff, even when lifting arms.

Piercings and Tattoos: no additional piercings or tattoos will occur while in placement at Carpenter Place. Earrings are the only allowed piercing to be worn while in placement.

Hair: If dyed it needs to be near natural color only. Hair extensions are allowed.

Makeup may be worn, but it must be appropriate and not misrepresent Carpenter Place.

We understand that all bodies are different and clothing looks different on different bodies. If a staff member deems your clothing to be inappropriate, whether or not it follows these guidelines, you may be asked to change and possibly send the clothing home.

Personal Items to Bring at Intake

We have made suggestions below on the number and type of items recommended for intake at Carpenter Place.

Clothing

Pants (5)
Shorts (5)
Shirts (10)
Dress Clothes
Pajamas

Outerwear/Accessories

Coat, jacket, sweatshirt
Robe
Purse/Backpack
Shoes, Belt
Swimsuit

Personal Care Items

Hair Dryer
Curling, Flat Iron
Glasses/Contacts
Make-up
Toiletries

Miscellaneous

Suitcase
Sentimental Items
Journal
Bible
Bedding (optional)

Towels and bedding are provide by Carpenter Place. Personal care products are also provided, unless specific brands are preferred, then it is the responsibility of the parent.



History

Maude Carpenter, a teacher by profession, had no children of her own, but loved each one she taught. Following the death of her husband, a banker in Protection, Kansas; Maude moved to Wichita and spread her love to children whose families had been touched by trauma, pain, and hardship. She made a major financial commitment to help build the first building on the newly purchased site for the children's home program that now honors her name. She was active with the children until her death, leaving a trust through her estate that continues to fund activities here at Carpenter Place.

The Maude Carpenter Children's Home began in 1943 by a congregation of the Churches of Christ in downtown Wichita. In 1946, land was purchased at 13th and Meridian. Local Churches of Christ and interested individuals (particularly Maude Carpenter) gave funds for construction of the first building on the old farm that once existed here. At that time, the agency was an orphanage, and many children stayed for years during their childhood, and many still stay in touch with us today!

Today, Carpenter Place remains associated and supported by several surrounding churches, foundations, businesses, and individual donors.

Carpenter Place has changed over the years, yet one thing has remained the same. We exist to help those families who have been touched by trauma, pain, and hardship and it is our prayer that we can be able to help rebuild families and restore lives through our Christian Family Program.

Contact Us

Carpenter Place, Inc.
1501 N Meridian Ave.
Wichita, KS 67203

Phone: 316.942.3221
Email: office@carpenterplace.org
Fax: 316.942.1750

Hours of Operation:
8:30 am—4:00 pm
Monday—Friday

